

# Neubau Schmuttertalgymnasium Diedorf

Florian Nagler Architekten / Herman Kaufmann Architekten

Jan Lindschulte  
Florian Nagler Architekten

BGF:	16.045 m <sup>2</sup>
BRI:	81.390 m <sup>3</sup>
Kosten, brutto (200 -700):	38,9 Mio. €
L.Ph.	1-9
Planung und Bauzeit:	01/12 - 09/15
Bauherr:	Landkreis Augsburg



Neubau Gymnasium Diedorf



## Planungsziele:

Typologie für neue pädagogische Konzepte

-

Plusenergiestandard

-

Holzbau



## Forschungsaspekte:

Thermische Massen zur Sicherung des Raumkomforts

-

Hohe Anforderungen an Schallschutz und Akustik

-

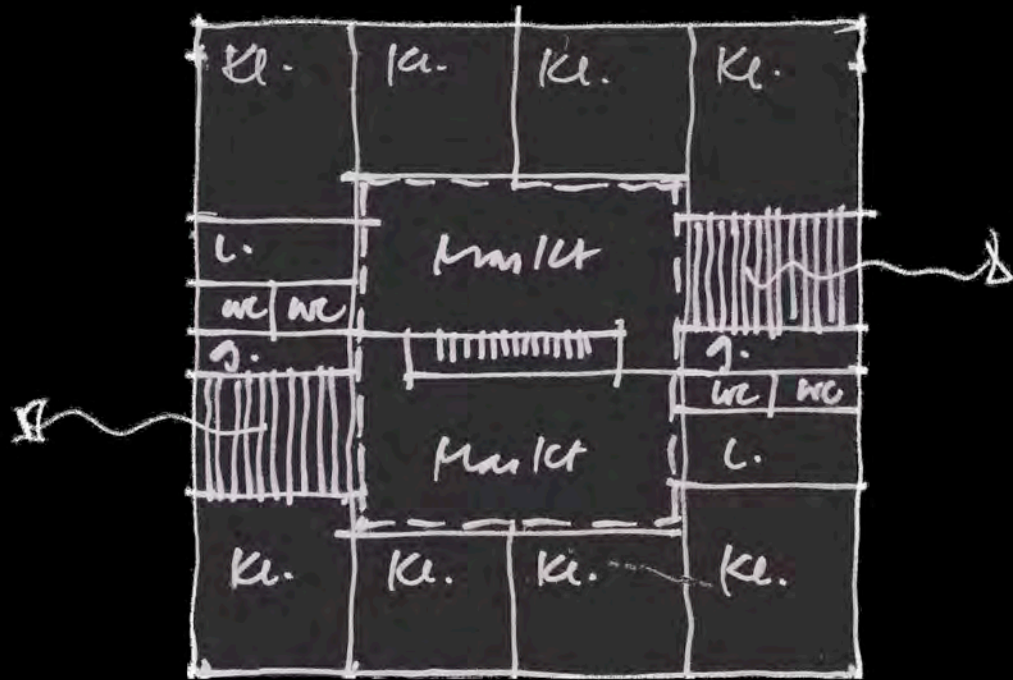
-

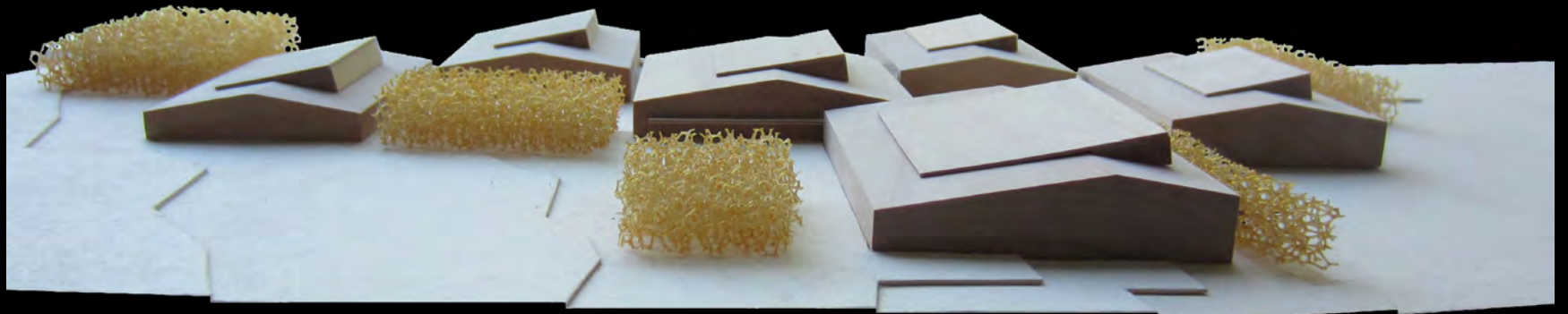
### **Ökologische Bauprodukte**

Luftqualität im Innenraum BNB 3.1.3

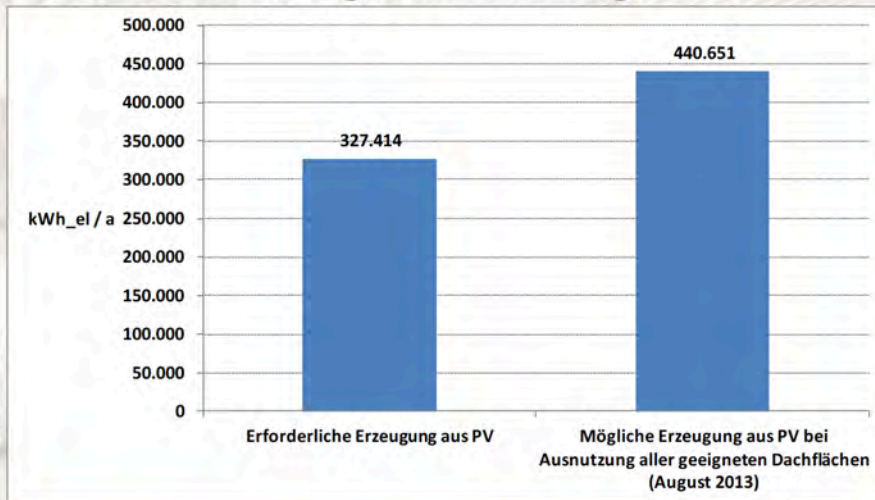
Risikoreduktion BNB 1.1.6



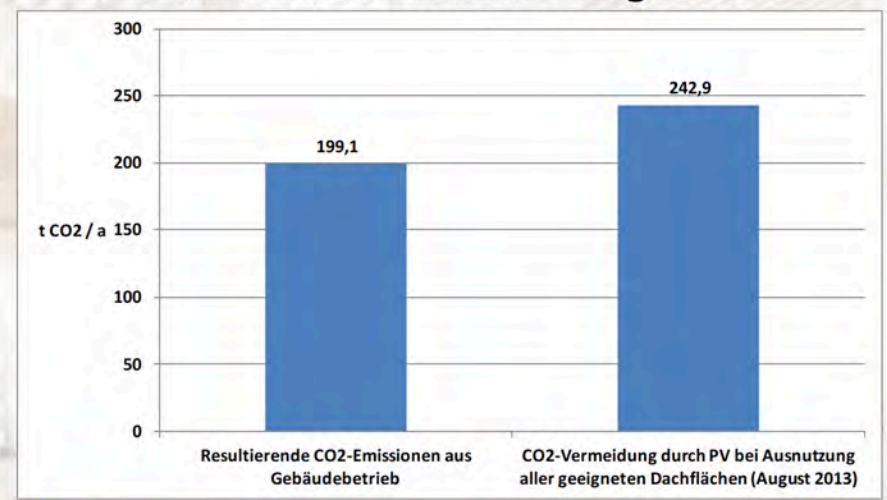




## Plusenergie-Schule möglich?



## CO2-neutrale Schule möglich?



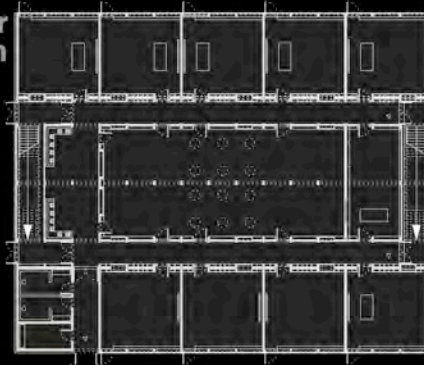




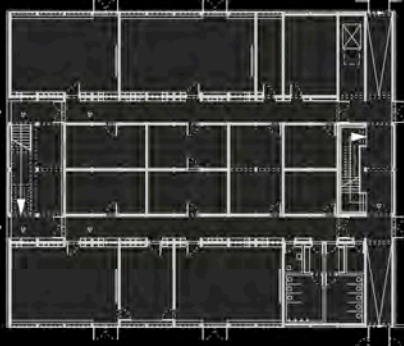




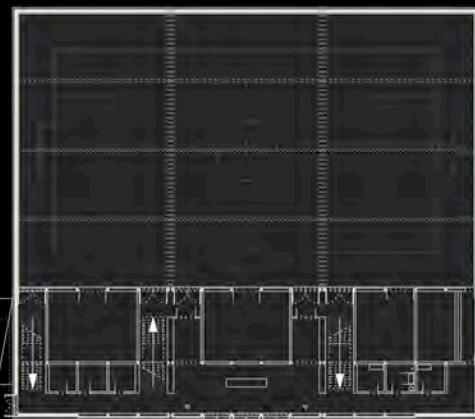
Naturwissenschaftlicher Bereich



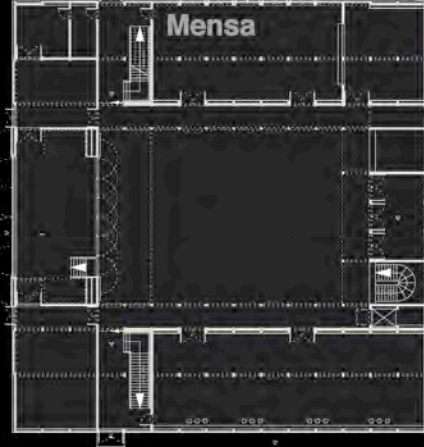
Kunst und Werken



Sport



Mensa



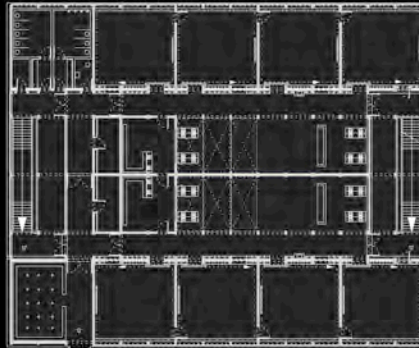
Musik



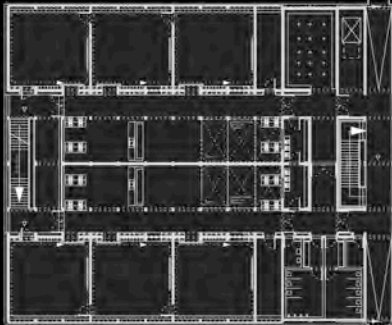
Aula

Bibliothek

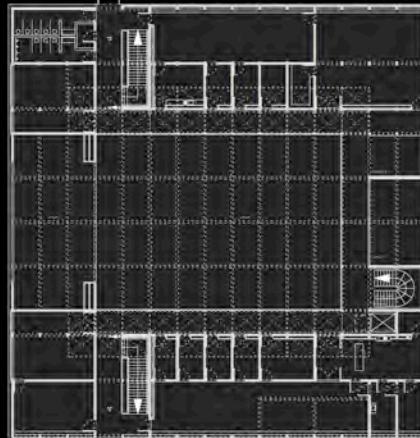
Lernhaus 1



Lernhaus 2

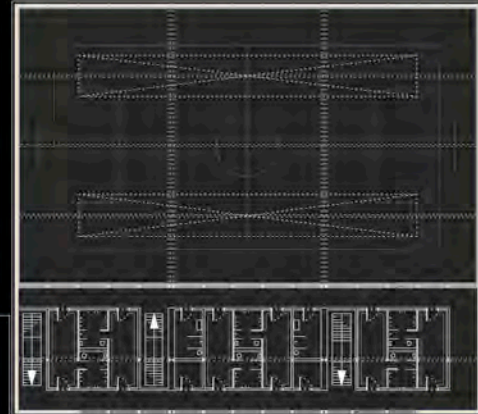


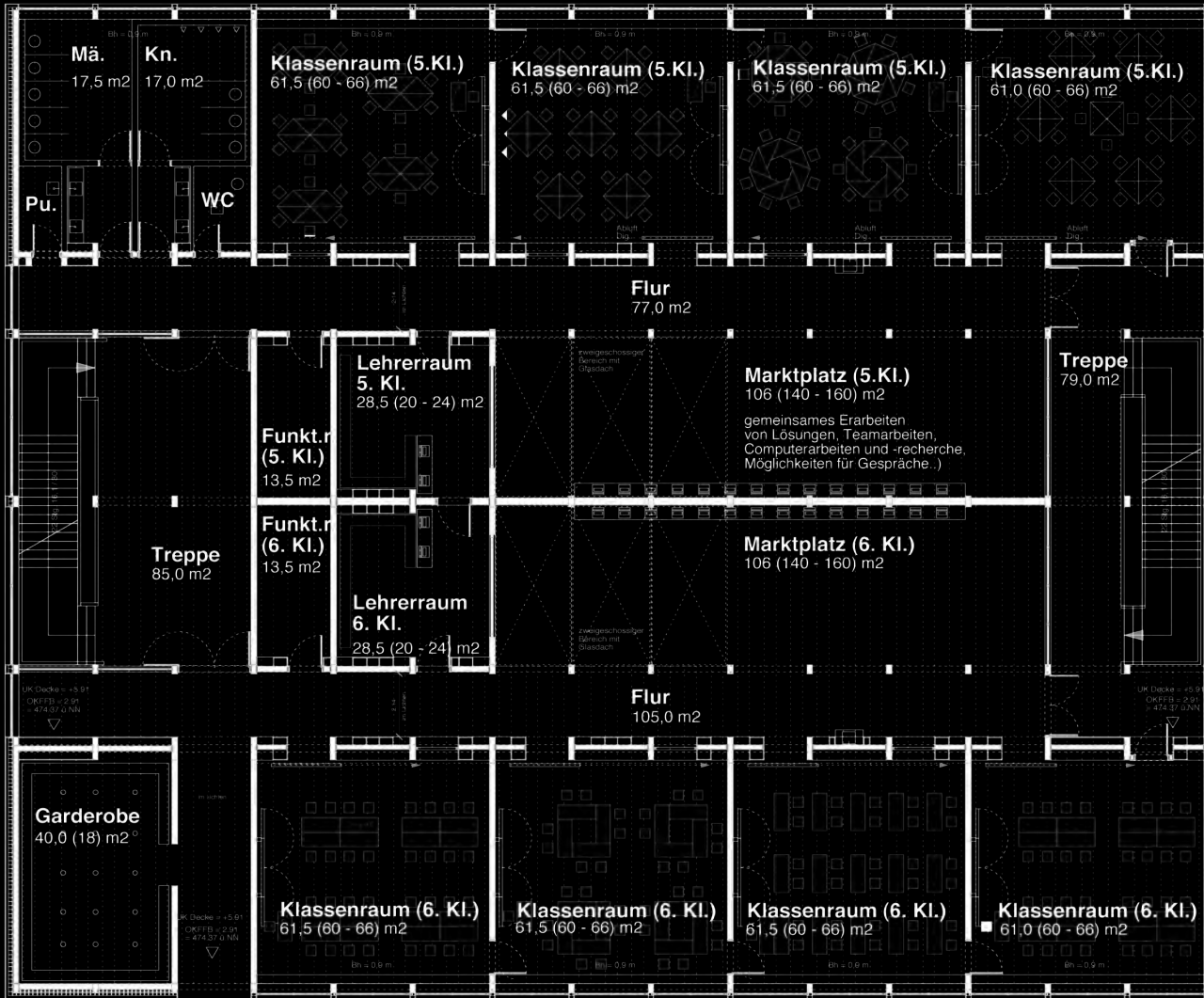
Lehrer



Lehrer

Sport

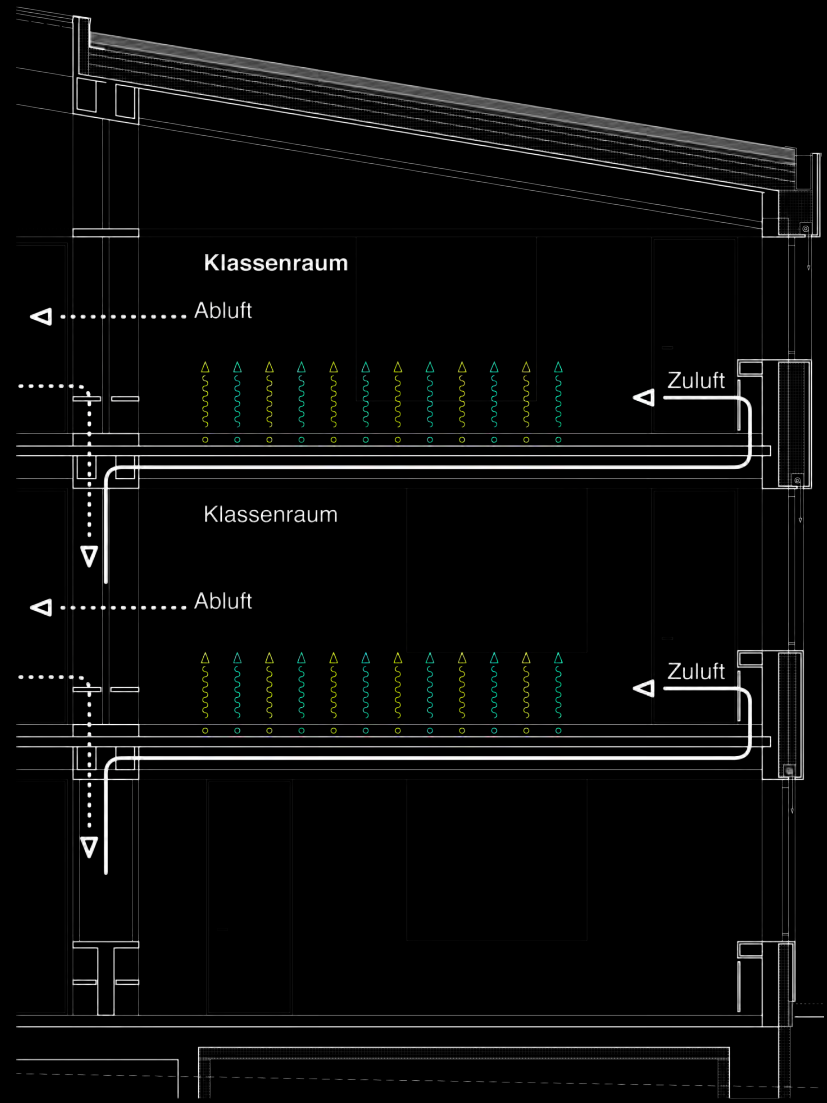


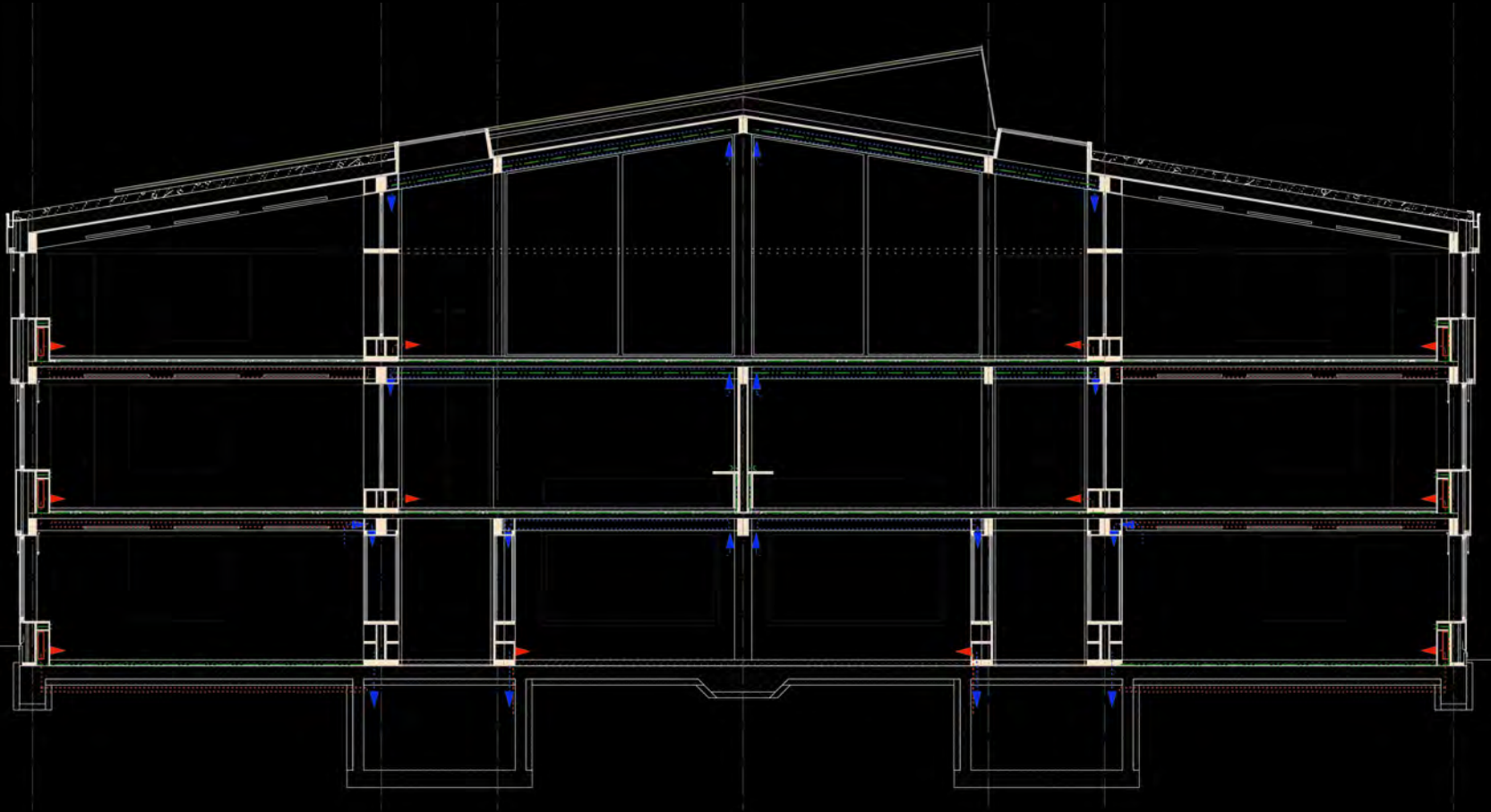


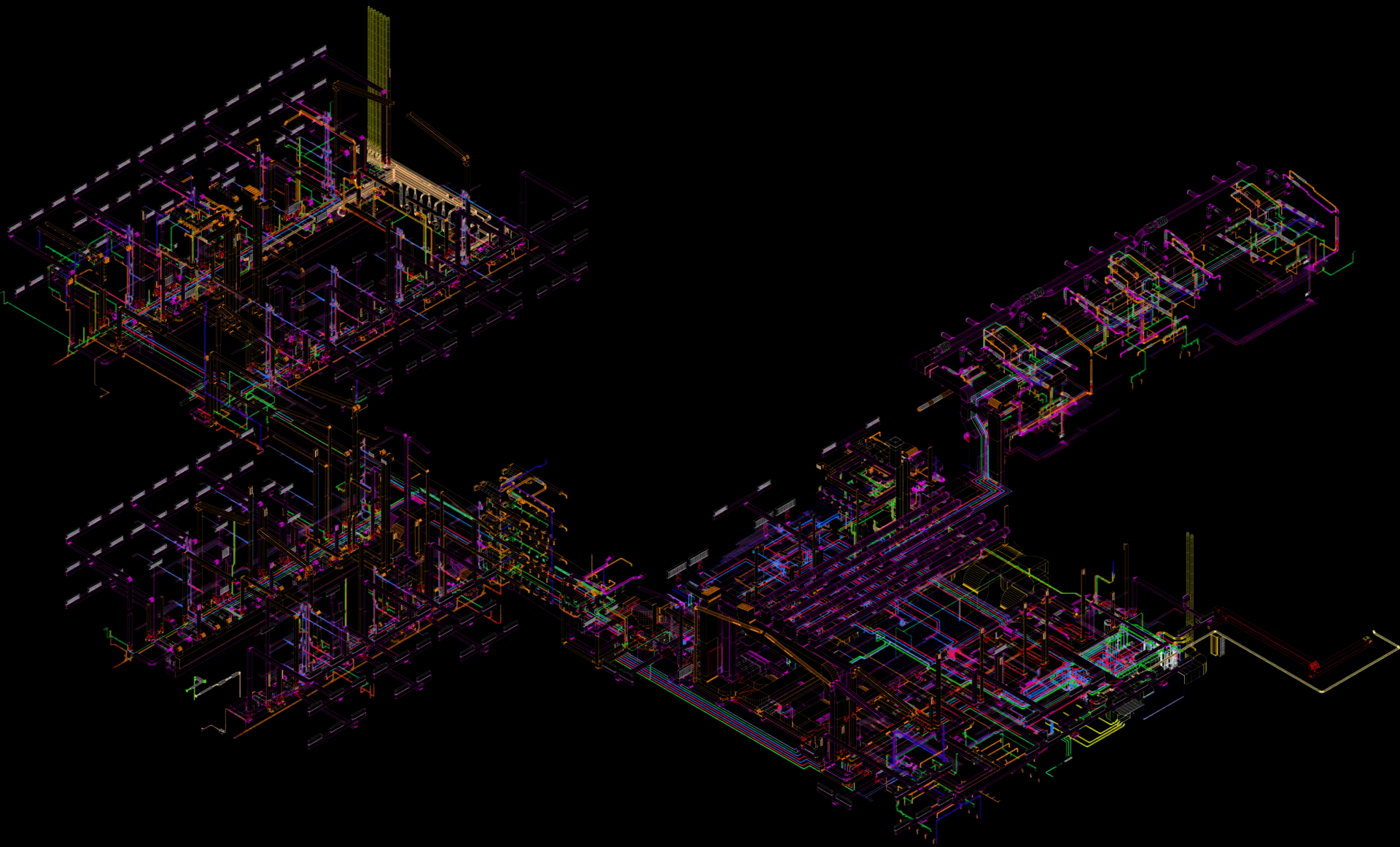








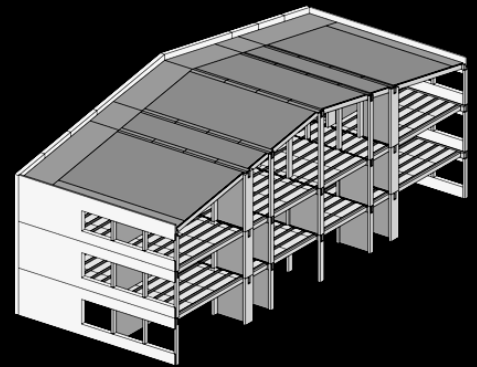
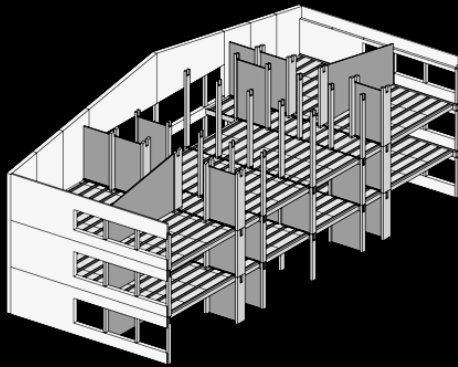
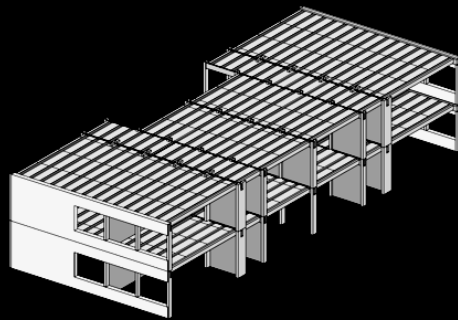
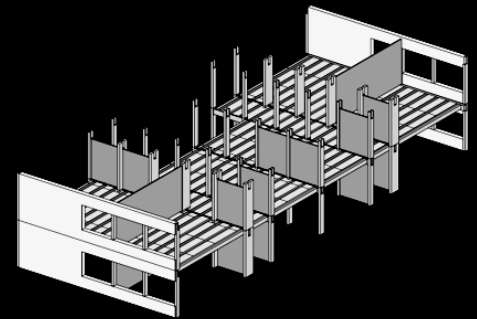
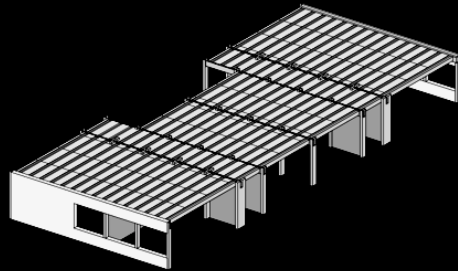
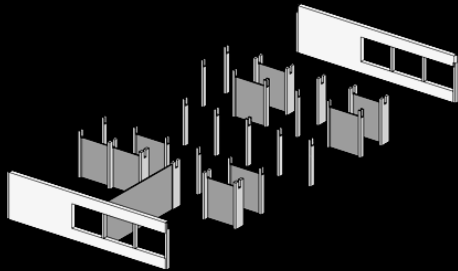






















EG 1/2 219.

ADJUSTOR  
ADJUSTOR





























Jan Lindschulte  
Florian Nagler Architekten